



The Loose Bead Society of Greater Milwaukee

Presents Beauty and the Beadist

2010 Spring Retreat

March 12-14

Radisson Hotel Racine Harbourwalk



BEADED STARS: LYNNE SOTO
TATTING: MARILEE ROCKLEY



What's new at the 7th Annual Loose Bead Society Retreat?

New! Wear Your Best Work Fashion Show Friday night at the Wine Tasting event!

New! Jammin' in our Jammies Open Beading on Saturday night!

New! Spa goodies and pampering!

Repeats of the Best

Door prizes, great lunch buffets, superior instructors and classes, the Bead Doctor, Friday night glass demo at Hot Shop Glass followed by wine tasting with hearty hors d'oeuvres at Uncorkt, private shopping party at Funky's on Saturday night, and most of all, great camaraderie and inspiring interchanges of ideas with your fellow beaders.

Beauty and the Beadist

This year's Retreat, Beauty and the Beadist, will enhance the beauty and creativity of our Beadists (bead artists). On Friday night, you'll be challenged to "show your stuff" when we have our first ever Wear Your Best evening: put on your favorite necklace, bracelet, ring or all of the above! The evening starts at Hot Shop Glass for a glass blowing demo. Later, at Uncorkt, there will be door prizes and a special prize for the Best of Show. Throughout the weekend, enjoy the creative atmosphere in the Open Beading room; as ideas and projects are shared, our knowledge and enthusiasm grows.

Along with the beauty of our creative energy, this year's retreat will provide a spa-like atmosphere. We'll be favoring you with beauty treats, hand massages, good food, and chocolate! On Saturday night, we'll be Jammin' in our Jammies. In the past, most beaders work late into the night, so why not be comfortable? Remember the Radisson also has a pool and workout room. What more could you ask for in a get-away? Learning, lounging, lots of laughing...come for a day or stay for the weekend!

Registration form on page 3

Hotel Accommodations

Radisson Hotel Racine Harbourwalk
223 Gas Light Circle • Racine, WI 53403

\$98 per night. For reservations, call the Radisson directly at 262-632-7777, and ask for "LOOSE BEAD SOCIETY RETREAT 2010." Reservations must be made prior to February 12. Parking: \$1.50 per ramp entry.

Directions can be found at: www.radisson.com/racinewi

Don't miss our one-day Retreat on February 20!

9:30am-4:30pm, at the New Berlin Public Library Community Room

This would be a great way for our new members to get acquainted and to see just how inspiring spending a day creating together can be! You'll be counting the days 'til you can get to Racine.

Never been to a Retreat? Here's some suggestions.

- If you don't know anyone, don't worry. Everyone makes new friends over a table of beads.
- Bring your backlog of kits or a big, repetitive project if happy chatter will distract you from "freeform" decision making! Above all, don't get stressed about making bead/project selections.
- Bring some of your finished work; others are always interested in what you are doing.
- Don't forget an extension cord for your task light!
- Dress for comfort—layers are handy.

www.loosebeadsociety.org

BEZELS & RESIN: DEBBI SIMON

Weekend Schedule

Registration form on page 3

FRIDAY, MARCH 12

From the time you arrive until the time you "crash:"
Open beading in the Radisson Harbourview Room, which will be open as long as our eyes are! This room is dedicated to open beading all weekend. Take breaks whenever you wish for excursions down Main Street, supper, a visit to RAM.
6-7:30PM Glassblowing demonstration at Hot Shop Glass
7:30-9PM Wine tasting with hearty hors d'oeuvres at Uncorkt, featuring the Wear Your Best Work fashion show (\$20 registration fee)

SATURDAY, MARCH 13

ALL DAY Open beading in the Harbourview Room; Bead Doctor available

9AM-NOON

Cubic Right Angle Weave Earrings—Lynne Soto, Zephyr Rm
Bezel, Bezel—Debbi Simon, Starboard Room

12:15PM Buffet lunch, Zephyr Rm, followed by door prizes

1:30-4:30PM Beaded Stars Bracelet—Lynne Soto, Zephyr Rm
Copper Lentil Bead Pendant—Louise Pederson, Starboard Rm

5PM Shopping excursion at Funky Hannah's. Enjoy wine and appetizers, and 10% off everything. Afterward, enjoy dinner on your own at one of the many great area restaurants. Then return to...

Jammin' in Your Jammies Open Beading: Wear your loungewear so you're comfy for a late night of beading!

SUNDAY, MARCH 14

ALL DAY Open beading; Bead Doctor available

9AM-NOON Lacy Treasure Beaded Pendant—
Marilee Rockley, Zephyr Room

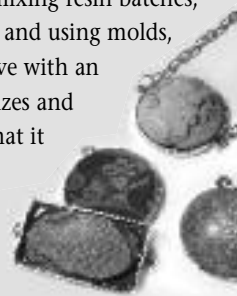
12:15PM Buffet lunch, Zephyr Room

1:30-5PM Glass Beading Making Class at Funky Hannah's

CLASSES

BEZEL, BEZEL – Debbi Simon, www.dsimonfineart.com
Saturday, 9am-noon, \$65/\$85 non-members

What a fun way to learn the ins and outs of resin! This mini workshop will start with a demo of the properties of 2-part resin. Participants will practice mixing resin batches, using color additives, layering, making and using molds, and adding found objects. You will leave with an eclectic group of pendants of various sizes and shapes and a working knowledge of what it takes to create with resin. The class fee includes 4 bezels, resin for use in class, mold making material and miscellaneous decorative items.



CUBIC RIGHT ANGLE WEAVE EARRINGS – Lynne Soto
Saturday, 9am-noon, \$40/\$60 non-members

Ever wonder how designers like Marcia DeCoster, Diane Fitzgerald, and David Chatt do sculptural beadwork? One technique is Cubic Right Angle Weave. Learn its secrets while making a pair of earrings. This very specific stitching pattern is not difficult, but it does take some concentration to see the thread path the first time. The class covers straight segments, turning corners, connection segments, and stacking additional layers to make components truly 3-dimensional.



Copper Lentil Bead Pendant: Hollow Forms in Copper Clay – Louise Pederson, www.pedersondesigns.blogspot.com
Saturday, 1:30-4:30pm, \$95/\$115 non-members

Learn hollow-form techniques to master one of the newest metal clays—copper clay—to make a richly textured lentil bead pendant. These basic skills can be applied in creating many unique, beautiful hollow-form components to add to your bead work. The class fee includes use of instructor's tools, 50 grams of copper clay and firing fee.

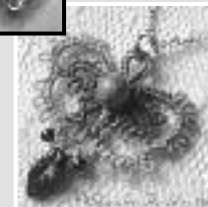


BEADED STARS BRACELET – Lynne Soto
Saturday, 1:30-4:30pm, \$40/\$60 non-members

Use your bead stash of seed beads, hex-cuts, triangles, cylinders, and specialty beads to make a star! Once you master the basic star pattern, the sky's the limit for what you can do with these enchanting beaded stars. Use one star for an earring. Connect 8 or 9 stars for a bracelet or more for a necklace. Get creative with color combinations and varying bead sizes, textures, and shapes. You decide how to repeat the beads within the loops and circles. No students will have stars that look exactly alike.

LACY TREASURE BEADED PENDANT: BEGINNING TATTING
Marilee Rockley, <http://yarnplayertats.blogspot.com>
Sunday, 9am-noon, \$50/\$70 non-members

Learn to master the "flip," the basic essential to shuttle tatting and make good progress on this beautiful beginner project, one of Marilee's original designs! Those with tatting experience may wish to join this workshop and bring their own project. The class fee will provide everything needed to get started: 2 tatting shuttles, heavy thread for practicing, quality size 10 crochet thread, a fine steel crochet hook, plus all beads and findings to complete two pendants.



Classes open to all skill levels

- A complete list of supplies will be on the LBS website and mailed/emailed to participants after registration.
- Samples of class projects will be on display at our December & January meetings. The artists' websites offer additional examples and information.

Registration All participants must pay a registration fee for each day attending. The fee includes open beading, lunch buffet and use of the facilities. Non-members may enroll in classes after priority registration for members ends January 12.

Open Beading/Registration/Lunch: \$35 per day

Saturday, March 13 \$_____

Sunday March 14 \$_____

Subtotal \$_____

CLASSES & EVENTS

MEMBERS NON-MEMBERS

LBS Membership \$24 — \$_____

Uncorkt Wine Tasting \$20 — \$_____

Bezel, Bezel \$65 \$85 \$_____

Copper Clay \$95 \$115 \$_____

Cubic Right Angle Weave \$40 \$60 \$_____

Star Bracelet \$40 \$60 \$_____

Tatting \$50 \$70 \$_____

Bead Making at Funky's \$50 — \$_____

Subtotal: \$_____

TOTAL, Registration & Classes \$_____

JANUARY 12: Priority Registration for members ends;
Non-member registration begins.

FEBRUARY 12: Hotel reservations are due; last day room rates are available.

MARCH 1: Registration must be received.

NAME _____

ADDRESS _____

CITY _____ STATE _____ ZIP _____

PHONE _____ E-MAIL _____

Please make checks payable to: LOOSE BEAD SOCIETY

Mail to: Kat Feldman

7293 N. Vine Street • Lannon, WI 53046